

# SNIPPETS

Shoal Bay Public School

P 4981 1007 | F 4984 1637 | E shoalbay-p.school@det.nsw.edu.au  
61 Rigney Street Shoal Bay NSW 2315 | PO Box 498 Shoal Bay NSW 2315 | www.shoalbay-p.schools.nsw.edu.au



From Kylie's Desk ....

Term 3 Week 7 | Mon 2 Sep 2019

## Term 3 Calendar 2019

### Wk 7 Sep

3 ~~V6 Sports Gala Day~~  
**cancelled**  
Cultural Groups

6 1H Assembly @2.30pm

### Wk 8 Sep

10 Kinder Orientation 2020  
2-3pm  
P&C Meeting @ 5.30pm

13 Oakvale Farm Excursion  
5J Assembly @ 2.30pm

### Wk 9 Sep

17 Aboriginal Transition to THS  
Kinder Orientation 2020  
2-3pm

19 Dance2B Fit Matinee  
12.30pm  
Dance2B Fit Evening  
concert 6pm

20 K/1A Assembly @2.30pm

## PBL

Our 3 core values are **RESPECT**,  
**RESPONSIBILITY** and  
**EXCELLENCE**.

This week we are focussing on  
**Lack of Respect**  
and **challenging manner**

Payments Due	Cost	Due by
Resource Pack	\$70	ASAP
Year 6 camp p4	\$65	overdue
S2 camp p3	\$50	overdue
Oakvale Farm Kinder	\$25	overdue
Swimming Scheme	\$75	26 Sept

## Dear parents, carers and friends of our school,

Even though it was a wet Friday morning it was lovely to see so many families sharing some time together at our Father's Day breakfast. Thank you to our wonderful P&C for organising and running this event. I would also like to thank the volunteers from Soldiers Point Lions Club who came along to help on the morning. I hope all our Fathers and Grandfathers had a great day.

## REGIONAL ATHLETICS

Hunter Regional Athletics carnival was held at Hunter Sports Centre in Glendale on Friday. It went ahead in the rain and our Shoal Bay students who were representing Port Stephens Zone were very wet by the end of the day! Two SBPS students are going through to compete at State in November:

- ◆ Kava for 12 years boys long jump.
- ◆ Lillian for 12 years girls 100m sprint.

## DANCE To Be FIT CONCERT

We will be holding our Heroes and Villains concert shortly. Information about the performances and tickets came home last week. The performances are:

### Week 9

- ◆ Matinee: Thursday, 19 September, doors open at 12:10pm
- ◆ Evening: Thursday, 19 September, doors open at 5.40pm

### Week 10

- ◆ Matinee: Tuesday, 24 September, doors open at 12:10pm

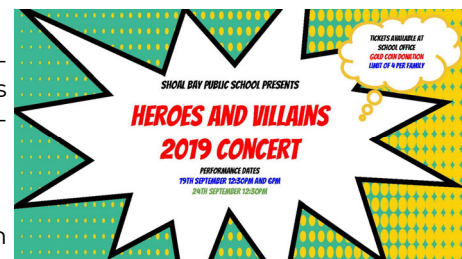
Tickets will be sold at the school office. There will only be 4 tickets available for each family to ensure we are able to provide the opportunity for as many families as possible to come along. They can be purchased for a gold coin donation. Tickets must be presented at the door before entry. All money raised from ticket purchases will go towards the purchasing of some new musical instruments. We will not be holding tickets for anyone sorry.

## KINDERGARTEN 2020

Orientation program Term 3

- ◆ Tuesday 10 September - 2pm
- ◆ Tuesday 17 September - 2pm
- ◆ Students will visit the classrooms and engage in some fun learning activities whilst parents meet in the school library.
- ◆ Orientation program for Term 4
- ◆ Tuesday 29 October 9:30-10:30am
- ◆ Tuesday 5 November 9:30-10:30am
- ◆ Tuesday 12 November 9:30-10:30am

Students will spend time in the Kindergarten rooms making new friends, learning the routines of school and participating in some early Literacy and Numeracy tasks. Parents are encouraged to relax in our hall. Coffee and tea will be available. This will be a great opportunity to meet some of the other parents.



## REQUEST FOR ALL SCHOOL MAINTENANCE LOCAL TRADES PROVIDERS AND SUPPLIERS

The NSW Government has committed the largest investment in planned maintenance at public schools in the history of NSW. A record \$1.3 billion is being spent on an ambitious delivery program, focused on employing local businesses and contractors across the state.

To assist in addressing regional school maintenance issues and at the same time provide work for local trade's persons and suppliers across the Hunter / Central Coast regions, over \$100 million is being invested to upgrade and maintain our school infrastructure.

Given this record spend by School Infrastructure NSW, you are invited to an Asset Management Unit industry breakfast briefing. This will provide information to existing and new contractors on how you can get involved.

To find out more by attending our Industry breakfast register at <https://www.eventbrite.com.au/e/industry-engagement-information-session-tickets-65766578607> or contact your Asset Management Unit on 4088 3500.

## Father's Day Breakfast



Year 6 made \$463 just from the father's day stall and we're yet to find out what they made from the cake stall.

## Work around the school

We have our small fence going down and a new security fence going up. Please bear with us and have patience as all these works are happening. Please make sure no-one is walking through carparks as there will be lots of trades driving in and out. Thanks.

## Swimming Scheme

Thanks for all the interest in Swimming Scheme. It is now full and we have children on a waiting list.

Ms Powell.

## Positive Behaviour for Learning (PBL)

At Shoal Bay Public School we demonstrate our PBL Values: RESPECT, RESPONSIBILITY and EXCELLENCE in all settings

**Respect**  
Shoal Bay students respect themselves, others and the environment.

Be caring

Be cooperative

Be polite

**RESPECT**  
Respect involves everyone being polite and respectful to each other, their belongings and the environment.

**Responsibility**  
Shoal Bay students are safe and responsible in all their actions.

Be safe

Make good choices

Own your own actions

**RESPONSIBILITY**  
Responsibility involves being a dependable and reliable person that is committed to keeping themselves safe, following through their obligations and taking responsibility for their actions.

**Excellence**  
Shoal Bay students strive to do their personal best.

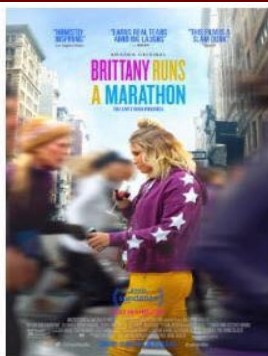
Be prepared

Be involved

Be your best

**EXCELLENCE**  
Excellence involves everyone being active learners who are prepared for learning and strive to achieve their personal best.





### Reclaim the Run Fundraiser

#### "Brittany Runs a Marathon"

Winner at the Sundance Film Festival



Special advance screening  
Nelson Bay Cinemas on

**Friday 6<sup>th</sup> September at 6.30pm**

Tickets - \$25, includes movie, welcome drinks & nibbles  
and ticket to lucky door prize

Tickets available from:

\* Nelson Bay Cinemas, Cinema Mall, Nelson Bay

\* Bay Doctors & Skin Cancer Clinic, 2/259 Soldiers Point Rd, Salamander Bay

\* or find details on our Facebook page – Reclaim the Run – The Bay

All proceeds go to the Yacaaba Centre, and Run Against Violence foundation



## Could \$500 help you with school costs?

Join Saver Plus and we'll match your savings, dollar for dollar, up to \$500 for school costs.

- laptops & tablets
- lessons & activities
- uniforms & shoes
- books & supplies
- sports fees & gear
- camps & excursions

To join Saver Plus, you must be at least 18 years or over, have a child at school or attend vocational education yourself, have regular income from paid employment (you or your partner), have a current Health Care or Pensioner Concession Card and be in receipt of an eligible Commonwealth social security benefit, allowance or payment\*



\* many Centrelink payments are eligible, please contact your local Coordinator for more information.

Saver Plus is an initiative of the Brotherhood of St Laurence and ANZ, delivered in partnership with Berry Street, The Benevolent Society and The Smith Family and other local community agencies. The program is funded by ANZ and the Australian Government Department of Social Services. Go to [www.dss.gov.au](http://www.dss.gov.au) for more information.

**Contact**  
your local Saver Plus Coordinator  
**Phone or SMS**  
your name and postcode to 1300 610 355

**Email**  
NewcastleSP@thesmithfamily.com.au

**Online**  
[saverplus.org.au](http://saverplus.org.au)

Find us on Facebook



## Shoal Bay OOSH

Located in Shoal Bay Public School



### Do you need before or after school care?

Did you know that at our before school care services we provide breakfast? Are you aware that children in the afternoon enjoy a nutritious afternoon tea and participate in a range of educational and stimulating activities? Our OOSH services provide a safe and fun environment where children can relax with their friends.

Shoal Bay OOSH is now operational here in the school hall. We operate every morning and afternoon from 7.00 to 9.00am and 3.00- 6.00pm. Thank you all for the very warm welcome into the school. For any enquiries please call the Administration office on 49880308

### Port Stephens Childrens Services

57-59 Port Stephens Street  
Raymond Terrace, 2324  
Phone: 4988 0308

E-mail:  
[childcare@portstephens.nsw.gov.au](mailto:childcare@portstephens.nsw.gov.au)  
[www.portstephens.nsw.gov.au](http://www.portstephens.nsw.gov.au)



## SHOAL BAY PUBLIC SCHOOL

61 Rigney St  
Shoal Bay 2315  
Email: [shoalbay-p.school@det.nsw.edu.au](mailto:shoalbay-p.school@det.nsw.edu.au)

Ph: 4981 1007  
Fax: 49841637

### NOTIFICATION OF INTENDED ENROLMENT KINDERGARTEN - Year .....

If you have a child eligible to enrol in Kindergarten, could you please complete the following and return to school as soon as possible. This will assist us in planning.

CHILD'S NAME: ..... DOB:..... M / F

CHILD'S NAME: ..... DOB:..... M / F

OTHER CHILDREN CURRENTLY ATTENDING NSW GOVT.SCHOOL OR TAFE:

NAME: ..... DOB:..... M / F

NAME: ..... DOB:..... M / F

PARENT CONTACT: Mrs/Mr/Ms/Miss

SURNAME:..... FIRST NAME:.....

ADDRESS: ..... PHONE NO. ....

OTHER PARENT NOT RESIDING WITH CHILD:.....

PRESCHOOL: .....

MEDICAL CONDITIONS THE SCHOOL SHOULD BE AWARE OF: .....

DOES YOUR CHILD HAVE ANY SPECIAL NEEDS? .....

WILL YOUR CHILD REQUIRE REGULAR PRESCRIBED MEDICATION  
WHILST AT SCHOOL?

YES ☐

NO ☐

DETAILS: .....

### Shoal Bay School Zones

